

adventure
MALDIVES



WATERSPORTS

Welcome to Q Adventure Maldives

Dear guest, we warmly welcome you to our water sports center and invite you to join the exotic water sports activities available here.

While enrolling for the courses or any other activities from our center, we kindly request you to follow our suggestion set for your safety and convenience.

Since the nature of the environment of this island nation is very fragile, we would highly appreciate it if you could kindly observe the environment considerations seriously.

It is always advisable to obtain necessary information such as weather, tide (high/low), wind and current which are very strong at times in the channel and are changeable. We would always be happy to assist you to make your journey with us an enjoyable one.

All water sports services are subject to availability and weather conditions.

Participants should take full responsibility for self-caused damages against people and the equipment's.

For more information please do not hesitate to ask for our assistance, our instructors will be more than happy to guide you through any activities available here.

We also request you to contribute your ideas to improve our services as you like.

Thank You very much for choosing Q adventure

Q adventure Team!

HEAVEN ADVENTURE

Per 2 Person USD \$. 455.84

10% service charge and 12% Tourism Goods and Services Tax (T-GST) are added to the price

JET SKI 30 MINUTES

Twin Share
5 Minutes Orientation with Instructor
Enjoy 30 Minutes with your partner
Follow the rules & regulations



FUN TUBE 10 MINUTES

Choose 1 activity
Twin Share
Pulled by speed boat or Jetski
Follow the instruction given by the instructors
Feel the excitement of this extreme sport



SNORKELING TRIP 120 MINUTES

Twin Share
A chance to visit the best snorkeling spot around this area
Enjoy the beauty of underwater with our guidance



PARASAILING 10 MINUTES

Twin Share
Life vest included



CANOEING 60 MINUTES

Twin Share
Life vest included
Enjoy canoeing around or in front of the island



ACTIVE PACKAGE

Per 2 Person USD \$. 308

10% service charge and 12% Tourism Goods and Services Tax (T-GST) are added to the price

JETSKI 15 MINUTES

Twin share

5 minutes orientation with instructor

Enjoy 15 minutes with your partner

Follow the rules & regulations



FUN TUBE 10 MINUTES

Twin Share

Pulled by the speed boat or jetski

Follow instruction given by instructors

Feel the excitement of this extreme sport



SNORKELING LESSON 60 MINUTES

Twin Share

All the gears are included

Must for non-snorkelers

Enjoy the beauty of underwater with our guidance

Experienced snorkelers can enjoy outer reef with an instructor



SAILING 60 MINUTES

Twin Share

Life vest included

Feel the breeze

Enjoy sailing through Maldivian sea



CANOEING 120 MINUTES

Twin Share

Life vest included

Enjoy Canoeing around or in front of the island



ADVENTURE TOURS

10% service charge and 12% Tourism Goods and Services Tax (T-GST) are added to the price

HALF DAY TOURS

Visit to a local village

Visit to one of the best snorkeling spot



SNORKELING TOURS

Snorkeling in your favorite point



SIGHT SEEING TOURS

Enjoy and experience the natural adventures

Explore surfing spots

Explore islands



DOLPHIN TOURS

Want to see dolphin?

This is a great opportunity, sign up!



SEA MASTER TRIPS

10% service charge and 12% Tourism Goods and Services Tax (T-GST) are added to the price

RENTAL AND EXCURSIONS

Speed Boat Trips

Fun Ride

| | | |
|---------|------------|--------------|
| 1-6 Pax | 30 Minutes | US.\$ 184.80 |
| 1-6 Pax | 1 Hour | US.\$ 308.00 |
| 1-6 Pax | 2 Hours | US.\$ 492.80 |

Half Day Journey

| | | |
|---------|---------|-------------------------|
| 4-6 Pax | 3 Hours | US.\$ 117.04 Per Person |
|---------|---------|-------------------------|

Snorkeling

| | | |
|---------|---------|------------------------|
| 1-4 Pax | 1 Hour | US.\$ 246.40 |
| 1-4 Pax | 2 Hours | US.\$ 431.20 |
| 4-6 Pax | 1 Hour | US.\$ 55.44 Per Person |
| 4-6 Pax | 2 Hours | US.\$ 98.56 Per Person |

To Local Village

| | | |
|---------|--------|------------------------|
| 1-4 Pax | 1 Hour | US.\$ 246.40 |
| 4-6 Pax | 1 Hour | US.\$ 61.60 Per Person |

To Resort Island

| | | |
|---------|--------|------------------------|
| 1-4 Pax | 1 Hour | US.\$ 246.40 |
| 4-6 Pax | 1 Hour | US.\$ 61.60 Per Person |

Dolphin Safari

| | | |
|-------------------|--------|-------------|
| 4-6 Pax | 1 Hour | |
| Adult | | US.\$ 71.46 |
| Children Under 12 | | US.\$ 35.72 |

Return Transfer to Gilli Lankanfushi US.\$ 32.03 Per Person
(Transfer charges for the guests who are coming to enroll in water sports activities)



CANOEING

10% service charge and 12% Tourism Goods and Services Tax (T-GST) are added to the price

RENTAL

Canoe Rental

1 Hour US\$ 19.71

2 Hours US\$ 32.03

Additional Hours US.\$ 9.86 Per Hour



SAFETY TIPS

- Always follow your instructor's guidelines.
- Know the weather forecast before you set out canoeing
- Check your equipment
- Familiarise yourself with the local area, its sensitive places and protected areas
- Do not damage bank side vegetation when launching or landing
- Canoe a safe distance away from marine life

PADDLE SURF

10% service charge and 12% Tourism Goods and Services Tax (T-GST) are added to the price

LESSONS

SUP lessons for beginners

1 - 2 45 minutes US.\$ 67.76 per person

RENTAL AND SURFING

SUP Boards

| | |
|--------------------|-------------|
| 1 Hour | US.\$ 24.46 |
| 2 Hour | US.\$ 43.12 |
| Half day (4 Hours) | US.\$ 61.60 |
| Full day | US.\$ 85.01 |

SUP Super Cruiser

| | |
|--------------------|-------------|
| 1 Hour | US.\$ 36.96 |
| 2 Hour | US.\$ 55.44 |
| Half day (4 Hours) | US.\$ 73.92 |
| Full day | US.\$ 97.33 |

Surf Boards

| | |
|--------------------|-------------|
| 1 Hour | US.\$ 24.64 |
| 2 Hour | US.\$ 43.12 |
| Half day (4 Hours) | US.\$ 61.60 |
| Full day | US.\$ 85.01 |



SAFETY TIPS

- Always follow your instructor's guidelines.
- Stay with your board at all times, which is more visible in a rescue situation than a lone swimmer and will provide in most cases an adequate platform of safety.
- Avoiding paddling in offshore winds (or tidal flow) and know how and when to respond if needs be (self rescue).
- you'll find that tidal currents, wind, and boat waves will add more challenge to your paddle better prepare you for the unexpected conditions.
- On-water sessions must choose paddling areas (boundaries) understood by paddlers for their safety and others and the overall learning environment. The use of markers, buoys or fixed objects can be used if necessary.

WINDSURFING

10% service charge and 12% Tourism Goods and Services Tax (T-GST) are added to the price

Courses

| | |
|-----------------------------|--------------|
| Basic Course 8 Hours | US.\$ 324.02 |
| International Basic License | US.\$ 61.60 |
| Fun Course 4 Hours | US.\$ 194.66 |
| Private Lesson 90 Minutes | US.\$ 91.17 |

Rental

| | |
|---------|-------------|
| 1 Hour | US\$ 32.03 |
| 2 Hours | US.\$ 51.74 |
| 3 Hours | US.\$ 71.46 |

Wind surfing Package

| | |
|----------|--------------|
| 10 Hours | US.\$ 194.66 |
|----------|--------------|



SAFETY TIPS

- Always follow your instructor's guidelines
- It's a good idea to wear neoprene shoes or boots with a rubber sole. This helps prevent you slipping or stubbing your feet on your equipment and protects them from sharp rocks or stones in the water.
- The windsurfer should guard against falls in shallow waters or anywhere submerged objects may be present.
- A wet suit can provide additional flotation, which helps reduce fatigue during the learning process, and is highly recommended for cold days.

DINGY SAILING

10% service charge and 12% Tourism Goods and Services Tax (T-GST) are added to the price

Lessons

Private 90 Minutes US.\$ 65.30
Per Person

Sailing

Sailing Around the Coast

1-2 Pax 1 Hour US\$ 45.58
1-2 Pax 2 Hours US\$ 81.31
1-2 Pax 3 or More US\$ 32.03 Per Hour



SAFETY TIPS

- Always follow your instructor's guidelines.
- Avoid contact with mast and overhead electrical wires.
- Wear a properly fitting life vest
- Beware of weather changes while sailing
- Always sail with others in sight

TRIMARAN SAILING

10% service charge and 12% Tourism Goods and Services Tax (T-GST) are added to the price

COURSES

| | | |
|----------------|------------|---------------|
| Basic Course | 8 Hours | US. \$ 388.08 |
| Fun Course | 4 Hours | US. \$ 232.85 |
| Private lesson | 90 Minutes | US. \$ 117.04 |



RENTAL AND EXCURSIONS

• Sailing with Captain

| | | |
|---------|---------|------------------------|
| 1-4 Pax | 1 Hour | US.\$ 133.06 |
| 4-6 Pax | 1 Hour | US.\$ 33.26 Per Person |
| 1-4 Pax | 2 Hour | US.\$ 236.54 |
| 4-6 Pax | 2 Hours | US.\$ 59.14 Per Person |

• Snorkeling Trips

| | | |
|------------------|---------|------------------------|
| 1-4 Pax | 2 Hours | US.\$ 241.47 |
| 4-6 Pax | 2 Hours | US.\$ 60.37 Per Person |
| Additional Hours | | US.\$ 67.76 Per Hour |

• Visit to Local Village

| | | |
|------------------|---------|------------------------|
| 1-4 Pax | 3 Hours | US.\$ 295.68 |
| 4-6 Pax | 3 Hours | US.\$ 73.92 Per Person |
| Additional Hours | | US.\$ 71.46 Per Hour |



- Sunset Sailing 4-6 Pax 1 Hour US.\$ 25.87 Per Person

SAFETY TIPS

- Always follow your instructor's guidelines.
- You need to wear a life jacket at all times when you're on the water, properly closed and a good fit for you.
- Under no circumstances should any of you drink alcohol before sailing or while on the sailing boat.
- Have sunglasses with you. When the sun's out it can be very bright out on the water, and you need to be able to overcome the glare.
- Don't ever jump off the sailing boat to swim. Always stay on the sailing boat unless it reaches back to the beach. Also, never indulge in horseplay.

CATAMARAN SAILING

10% service charge and 12% Tourism Goods and Services Tax (T-GST) are added to the price

COURSES

| | | |
|-----------------------------|------------|--------------|
| Basic Course | 8 Hours | US.\$ 336.34 |
| International Basic License | | US.\$ 61.60 |
| Fun Course | 4 Hours | US.\$ 206.98 |
| Private Lesson | 90 Minutes | US.\$ 103.49 |

RENTAL & EXCURSIONS

Sailing With Captian

| | | |
|------------------|---------|---------------------|
| 1-2 Pax | 1 Hour | US.\$ 77.62 |
| 1-2 Pax | 2 Hours | US.\$ 135.52 |
| Additional Hours | | US\$ 51.74 Per Hour |

Without Captian

| | | |
|------------------|--------|----------------------|
| 1-2 Pax | 1 Hour | US.\$ 65.39 |
| 1-2 Pax | 2 Hour | US.\$ 135.52 |
| Additional Hours | | US.\$ 51.74 Per Hour |

| | | |
|------------------------|----------|--------------|
| <u>Sailing Package</u> | 10 Hours | US.\$ 258.72 |
|------------------------|----------|--------------|

Snorkeling Trips

| | | |
|------------------|------------|----------------------|
| 1 Pax | 90 Minutes | US.\$ 117.04 |
| 2 Pax | 2 Hours | US.\$ 149.07 |
| Additional Hours | | US.\$ 55.44 Per Hour |

Visit to Local Village

| | | |
|------------------|---------|----------------------|
| 1-2 Pax | 3 Hours | US.\$ 232.85 |
| Additional Hours | | US.\$ 55.44 Per Hour |

Sunset Sailing

| | | |
|---------|--------|-------------|
| 1-2 Pax | 1 Hour | US.\$ 91.17 |
|---------|--------|-------------|



SAFETY TIPS

- Always follow your instructor's guidelines.
- You need to wear a life jacket at all times when you're on the water, properly closed and a good fit for you.
- Under no circumstances should any of you drink alcohol before sailing or while on the sailing boat.
- Have sunglasses with you. When the sun's out it can be very bright out on the water, and you need to be able to overcome the glare.
- Don't ever jump off the sailing boat to swim. Always stay on the sailing boat unless it reaches back to the beach. Also, never indulge in horseplay.

Snorkeling

10% service charge and 12% Tourism Goods and Services Tax (T-GST) are added to the price

Snorkeling Lesson 1 Hour US.\$ 51.74 Per Person
(Includes Equipments with the Instructor)



SAFETY TIPS

- Always follow your instructor's guidelines
- Be sure to stay close to shore & be aware of your surroundings.
- Know the area that you are snorkeling in & to avoid exhaustion consider snorkeling with a flotation device such as life jacket or a life ring because it can make your excursion significantly more enjoyable by allowing you to focus on what you are watching and not on any fatigue you may be experiencing.
- Do not touch marine life: Although most underwater animals will avoid contact with humans, many creatures have some method of defense if they feel in danger. To protect yourself, maintain a safe distance from all sea creatures.

GLASS BOTTOM BOAT

10% service charge and 12% Tourism Goods and Services Tax (T-GST) are added to the price

ADVENTURE TRIPS

| | | |
|-----------|------------|-------------|
| Adult | 60 minutes | US.\$ 51.74 |
| Children | 12 & Under | US.\$ 39.42 |
| Childrens | 5 & Under | FREE |



Imagine No More...

JETSKI RENTAL

10% service charge and 12% Tourism Goods and Services Tax (T-GST) are added to the price

RENTAL (with 5 Minute Orientation)

1-2 Pax 60 Minutes US.\$ 221.76

1-2 Pax 30 Minutes US.\$ 147.84

1-2 Pax 15 Minutes US.\$ 80.08



PLEASE SCAN CONSTANTLY FOR PEOPLE, OBJECTS AND OTHER WATER CRAFTS

Tips

1. Attach the engine shut-off cord to your left wrist before starting the engine
2. Do not operate the start switch for more than 5 seconds at a time.
3. If the engine does not start in 5 seconds, release the start switch and try again after 15 seconds.
4. When the engine starts, thrust from the jet unit will move the water craft. Squeezing the throttle lever produces more thrust. Apply only enough throttles to keep the engine running.

ATTENTION!!

\$ 50 dollars fine will be charged for ignoring the rules.
\$ 50 dollars fine will be charged for capsizing the Jet Ski.



To avoid collisions

1. Do not follow directly behind water scooter or other boats.
2. Do not go near others to spray or splash them with water.
3. Avoid sharp turns or other maneuvers that make it hard for others to avoid you or understand where you are going.
4. Avoid areas with submerged objects or shallow water.

Take early action to avoid collisions. Remember, water craft and other boats
DO NOT HAVE BRAKES.

JET TOURS

10% service charge and 12% Tourism Goods and Services Tax (T-GST) are added to the price

FUN FUN

-Ride around the Paradise Plate

Duration: 1 Hour

Price: US\$ 300

Gear Included: Life Jackets, bottle of water and a towel for each person.



SEE IT ALL

-Dolphin safari

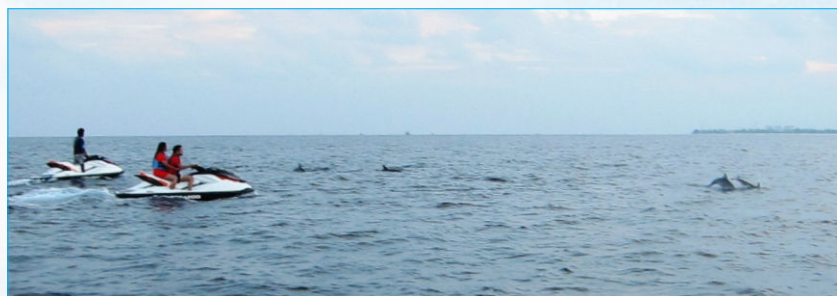
-Ride along Man Made Island

-Hideout in Indian Ocean

Duration: 2 Hours

Price: US\$ 400

Gear Included: Life Jackets, bottle of water and a towel for each person.



DO IT ALL

-Sand Bank

-Snorkeling

-Fun Ride

Duration: 3 Hours

Price: US\$ 500

Gear Included: Life Jackets, Snorkeling Gears (mask, snorkel and fins) or you can bring your own, bottle of water and a towel for each person.



SAFETY TIPS

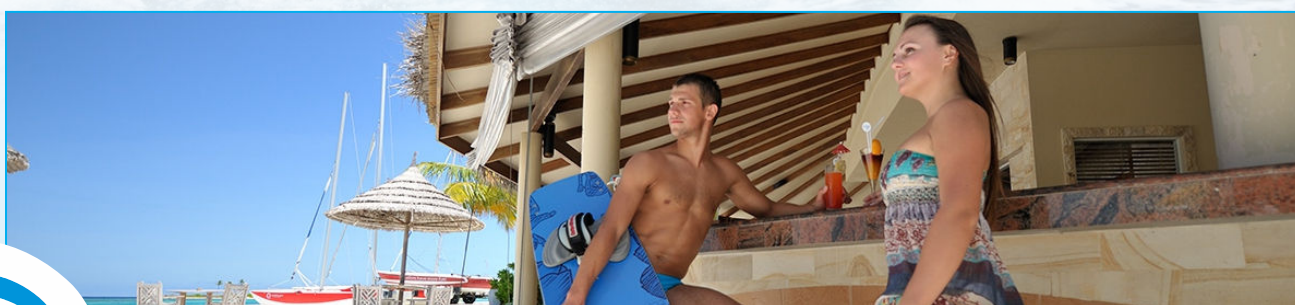
You can go in shallow water. You can maneuver easily. You can accelerate quicker, but you are more affected by waves, turbulence and obstructions. Life jackets must be worn by the operator and passenger. Be sure they are properly fitted and fastened completely. It is wise to take into consideration that other boaters may not realize your differences, so you must take extra precautions when in traffic. Safe use of a jet ski is a great responsibility. Maturity of judgment and physical capability are necessary to safely operate the craft. There are three primary types of situations you may be confronted with while riding: head on, overtaking and crossing over. These three riding right of ways can be unnerving, especially for a new rider, so take a moment to visualize the situation in your head so that when you are confronted, you will be comfortable. When making a pass, slow down and make sure the other boater knows what you are doing. Make sure that you can see as far as possible by staying well back behind the boat so you can see if other traffic is coming. Fishermen too should be given plenty of room. On boats or ashore, fishermen usually have lines or nets out that can be damaged by or damaging to your watercraft or to you. Some fishermen also feel that noise scares fish away, which can cause strained relations between fishermen and watercraft users. When crossing, the motorboat has the right of way. However, remember that not everyone knows just who has the right of way, so be defensive. Be alert to all situations involving anyone who might be in the water like water skiers, divers, swimmers and other personal watercraft operators. Keep a sharp lookout for swimmers. Remember that the glare of the sun obscures them as well as objects floating in the water.

BOARDING SPORTS

10% service charge and 12% Tourism Goods and Services Tax (T-GST) are added to the price

WAKE BOARDING, WATER SKIING KNEE BOARDING

| | | |
|--------------------------------------|------------|--------------|
| Lesson for Kids (UNDER 10) | 15 Minutes | US.\$ 51.74 |
| Lesson for Adults | 25 Minutes | US.\$ 77.62 |
| Course (25 Minute Lesson + 5 Rounds) | 50 Minutes | US.\$ 155.23 |
| One Lap | 8 Minutes | US.\$ 39.42 |



SAFETY TIPS

- Always follow your instructor's guidelines
- Always wear a life jacket.
- Should wear a safety helmet when wakeboarding.
- Always have a spotter sit at the back of the boat to watch the skier and communicate with the boat operator.
- Immediately let go of the tow rope when you fall.
- Make sure the propeller of the boat has stopped before getting back into the boat.
- Stop water skiing and wakeboarding as soon as you hear thunder, see lightning or know a storm is coming.
- Do not water ski or wakeboard in restricted areas.
- Do not use drugs or alcohol water skiing or wakeboarding.

FUN TUBES

10% service charge and 12% Tourism Goods and Services Tax (T-GST) are added to the price

Kids

1 Pax 08 Minutes US.\$ 25.87

2 Pax 08 Minutes US.\$ 39.42

Adults

1 Pax 08 Minutes US.\$ 45.58

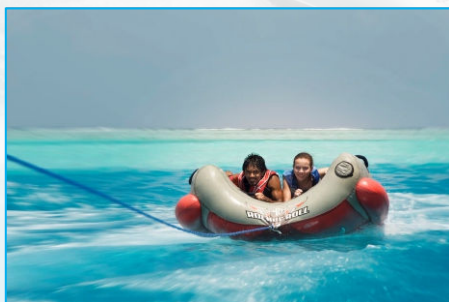
2 Pax 10 Minutes US.\$ 57.90

3 Pax 10 Minutes US.\$ 77.62

4 Pax 10 Minutes US.\$ 97.33

5 Pax 10 Minutes US.\$ 117.04

6 Pax 10 Minutes US.\$ 149.07



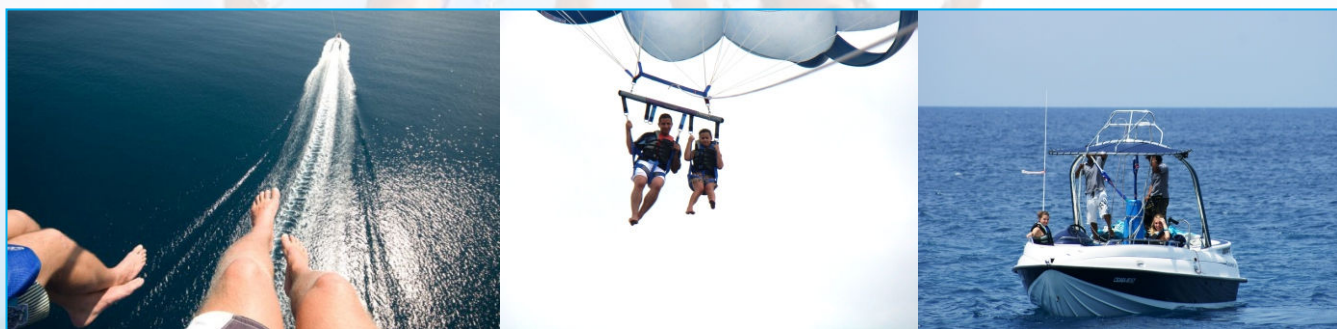
SAFETY TIPS

- Always follow your instructor's guidelines.
- Riders should never attach themselves to the towable cover & never put your arms through the strapping of the towing system or the handles.
- Never wedge your hands or feet under the cover or between the cover and the tube.
- Communicate with your driver and spotter. Let them know if the driver is going too fast, or the ride is too rough, or if you want to stop. Know your limits and use your common sense.
- Stop when you begin to tire or you feel the ride may be unsafe.

Parasailing

10% service charge and 12% Tourism Goods and Services Tax (T-GST) are added to the price

| | | | |
|---------------|---------|------------|--------------|
| Single Flight | 1 Pax | 15 Minutes | US.\$ 147.84 |
| Double Flight | 2 Pax | 15 Minutes | US.\$ 221.76 |
| Triple Flight | 3 Pax | 15 Minutes | US.\$ 314.16 |
| (PVT) Flight | 1-3 Pax | 15 Minutes | US.\$ 326.48 |



SAFETY TIPS

- Parasailing is generally viewed as a fun experience that people participate in whilst on holiday at a sunny beach resorts. It is also a highly exhilarating and challenging experience and a character building experience for many people.
- Even if you can swim you should not consider setting foot on a parasailing boat without wearing a life jacket.
- it 's always worth doing your own inspection too when you are being fitted with your harness.
- you will be told what the signal is if you want to come back down once you are in the air.
- If you notice any signs of weakness in the harness straps, you should immediately bring it to the attention of the operator and ask for a replacement.
- Always follow your instructor's guidelines.

DHOANI EXCURSIONS

10% service charge and 12% Tourism Goods and Services Tax (T-GST) are added to the price

SNORKELING

6-30 Pax 2 Hour

Adult

US.\$ 43.12

Children Under 12

US.\$ 21.56



SAFETY TIPS

- Always follow your instructor's guidelines.
- Check the equipment carefully and know how it functions.
- Learn how to clear water from the snorkel when treading water.
- Learn how to put your mask back on when you tread water.
- Be careful not to swim or be carried by a current too far from shore or the boat.
- Never snorkel alone.

COMMON MARINE LIFE OF MALDIVES



Clark's Anemone Fish



Sergeant Major Fish



Moorish Idol



Maldives Anemone Fish



Schooling Banner Fish



Bennet's Butterfly Fish



Sea Goldie



Empress Angel Fish



Porcupie Fish



Bird Wrasse



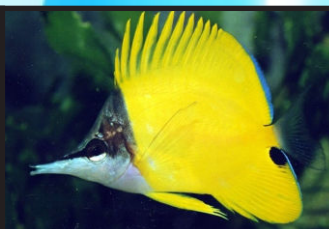
Spotted TrunkFish



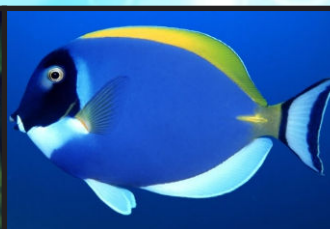
Teadrop Butterfly Fish



Blue Stiped Snapper



Forceps Fish



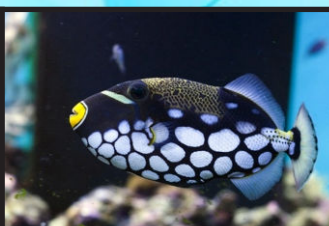
Blue Surgeonfish



Picasso Triggerfish



Chocolate Dip Damsel fish



Clown Trigger fish



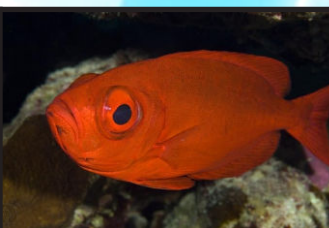
Manybar Goat Fish



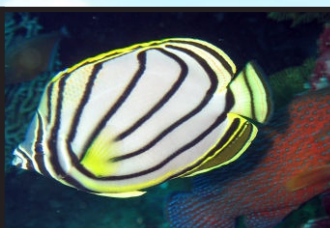
Parrot Fish



Batfish



Goggle Eye



Meyer's Butterfly fish



Elegant Fire Goby

COMMON MARINE LIFE OF MALDIVES



Vermilion Rock Cod



Honeycomb Grouper



Giant Squirrel fish



Coronation grouper



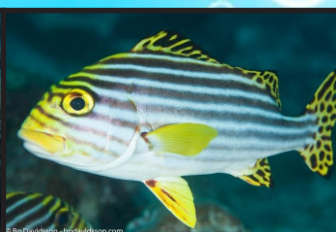
Humpback Snapper



Lion Fish



Titan Trigger fish



Oriental Grunt



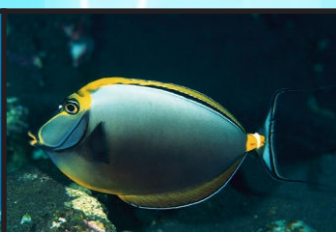
Peacock Grouper



Napoleon



Bullet head Parrot fish



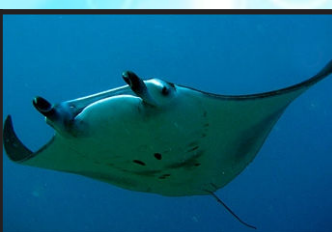
Orange Spine Unicorn fish



Spinner Dolphin



Sting Ray



Manta Ray



Spotted Eagle Ray



Green Sea turtle



Hawksbill



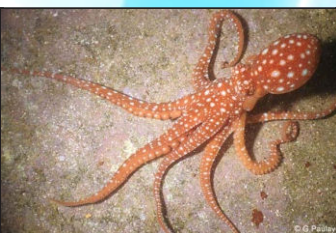
Honeycomb Moray



Whitemouth Moray



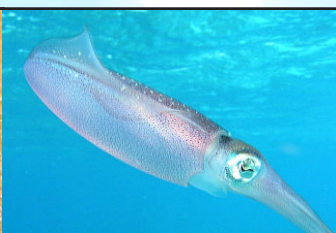
Octopus rubescens



Octopus ornatus



Spiny Lobster





Caribbean Reef Squid




Paradise Island Resort
Lankanfinolhu, Maldives

FOLLOW US ON

 Qadventure

 Qadventure Maldives

 Qadventuremv

info@qadventure.com.mv

SUPSKI

10% service charge and 12% Tourism Goods and Services Tax (T-GST) are added to the price

Lap / Lesson

8 minutes US.\$ 39.42 (per person)

Three easy steps to become a master of SupSki



SAFETY TIPS

- Always follow your instructor's guidelines
- Always wear a life jacket.
- Should wear a safety helmet when Supskiing.
- Always have a spotter sit at the back of the boat to watch the skier and communicate with the boat operator.
- Immediately let go of the tow rope when you fall.
- Make sure the propeller of the boat has stopped before getting back into the boat.
- Stop Supskiing as soon as you hear thunder, see lightning or know a storm is coming.
- Do not Supski in restricted areas.
- Do not use drugs or alcohol before supskiing.

JET BLADE

10% service charge and 12% Tourism Goods and Services Tax (T-GST) are added to the price

BASIC LESSONS

40 minutes US.\$ 174 per person

FLIGHT FOR EXPERIENCED

15 minutes Us.\$ 145 per person



SAFETY TIPS

- Always follow your instructor's guidelines
- Always wear a life jacket.
- Should wear a safety helmet when trying Jet Blade.
- Always have a spotter sit at the back of the boat to watch the skier and communicate with the boat operator.
- Immediately let go of the tow rope when you fall.
- Make sure the propeller of the boat has stopped before getting back into the boat.
- Stop Jet blade as soon as you hear thunder, see lightning or know a storm is coming.
- Do not do Jet blade in restricted areas.
- Do not use drugs or alcohol before trying Jet blade.